



Beaufort County Public Works
Stormwater Infrastructure
Project Summary

Project Summary: Okatie Animal Shelter- Pritcher Point Road

Activity: Drainage Improvement

Duration: 09/27/17-11/14/17

Narrative Description of Project:

Project improved 2,200 L.F. of drainage system. Grubbed, cleared and reconstructed 1,170 L.F. of workshelf. Reconstructed 1,170 L.F. of channel. Cleaned out 1,030 L.F. of roadside ditch. Repaired washout. Hydroseeded for erosion control.

2018-002 / Okatie Animal Shelter	Labor Hours	Labor Cost	Equipment Cost	Material Cost	Contractor Cost	Indirect Labor	Total Cost
AUDIT / Audit Project	0.5	\$10.90	\$0.00	\$0.00	\$0.00	\$0.00	\$10.90
CCO / Channel - cleaned out	90.0	\$2,029.60	\$1,618.97	\$279.00	\$0.00	\$951.60	\$4,879.17
HAUL / Hauling	63.0	\$1,288.01	\$593.46	\$351.19	\$0.00	\$177.14	\$2,409.80
HYDR / Hydroseeding	15.0	\$346.20	\$30.44	\$113.30	\$0.00	\$204.40	\$694.34
PL / Project Layout	15.0	\$337.30	\$18.00	\$19.35	\$0.00	\$138.25	\$512.90
RPWO / Repaired Washout	20.0	\$481.80	\$316.12	\$22.85	\$0.00	\$276.50	\$1,097.27
RSDCL / Roadside Ditch - Cleanout	111.0	\$2,517.48	\$529.52	\$144.99	\$0.00	\$1,230.62	\$4,422.61
UTLOC / Utility locates	1.0	\$24.70	\$0.00	\$0.00	\$0.00	\$13.23	\$37.93
WSDR / Workshelf - Dressed	30.0	\$680.40	\$76.60	\$22.57	\$0.00	\$276.50	\$1,056.07
WSGRB / Workshelf - Grubbed	160.0	\$3,741.96	\$3,867.57	\$732.77	\$0.00	\$2,197.92	\$10,540.22
WSL / Workshelf - Level	30.0	\$680.40	\$76.60	\$15.60	\$0.00	\$276.50	\$1,049.10
2018-002 / Okatie Animal Shelter Sub Total	535.5	\$12,138.75	\$7,127.28	\$1,701.62	\$0.00	\$5,742.66	\$26,710.31
Grand Total	535.5	\$12,138.75	\$7,127.28	\$1,701.62	\$0.00	\$5,742.66	\$26,710.31

Before

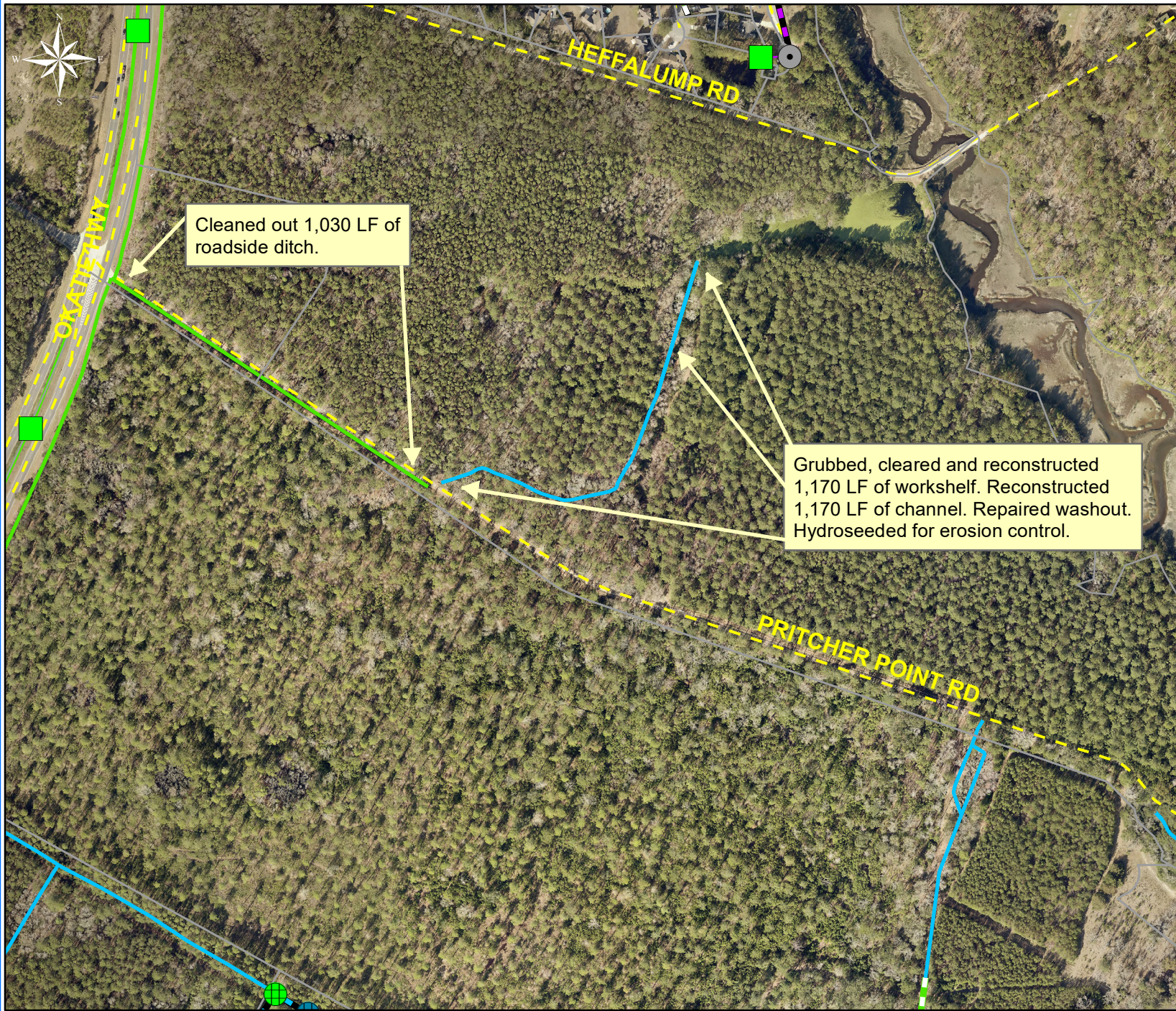


During



After





Project: Okatie
Animal Shelter -
Pritchler Point Road

Activity: Drainage
Improvement

Project #:
2018-002

Township/SW Dist:
Bluffton/4

Completed:
November 2017

Legend	
	Access Pipe
	Bleeder Pipe
	Channel Pipe
	Channel
	Stream
	Crossline Pipe
	Driveway Pipe
	Lateral
	Lateral Pipe
	River
	Road Pipe
	Roadside
	Roadside Pipe

Cleaned out 1,030 LF of roadside ditch.

Grubbed, cleared and reconstructed 1,170 LF of workshelf. Reconstructed 1,170 LF of channel. Repaired washout. Hydroseeded for erosion control.



1 inch = 420 feet

Prepared By: BC Stormwater Management Utility
Date Print: 06/21/18

File: C:\project summaries map\Okatie Animal Shelter- Pritchler Point Rd_2018-002